

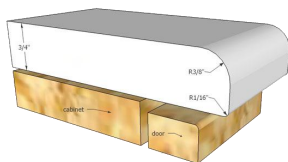
# YSM 8 Head Multifunction Granite Edge Profile Polishing Machine



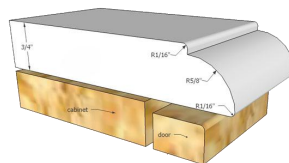
## Description

YSM 8 Head Multifunction Granite Edge Profile Polishing Machine, this machine is one of the latest models of YONGTAO Machinery. The machine is mainly used to process all kinds of single or double thick slab, such as window slab. It can make round edge, ogee edge, pencil edge etc. The machine have rough grind(profile) and polish two parts, reasonable structure, running stable. The rough grind part adopt layered grinding, and the polishing part adopt PLC system to automatically control wheels. It make sure the edge surface smoothly. The machine is easy to operate easy to repair, popular in market.

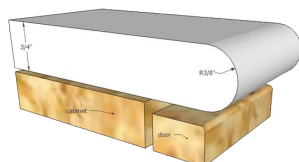
## Process Edge Shapes



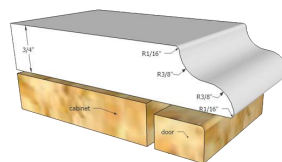
Demi Bullnose



DuPont



Full Bullnose



Ogee

## Parameter

No.	Name	Parameter
1	Nos. of profile head	3pc
2	Nos. of polish head	5pc
3	Diameter of wheel	Φ 150-200mm*30mm
4	Motor power of profile head	5.5kw
5	Motor power of polish head	3kw
6	Method of polishing	automatic
7	Processing width	100-2800mm
9	Processing speed	0.5-1.5m/min
10	Max processing thickness	60mm
11	Total power	40.32kw
12	Air consumption	30L/min
13	Water consumption	400L/min
14	Size of machine	3.48m*1.24m*1.85m
15	Weight	About2800 kg