

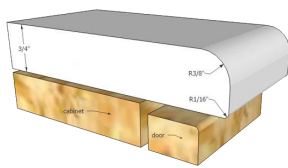
YSMD 5+3+3 Multifunction Marble Edge Profile Chamfer Polishing Machine



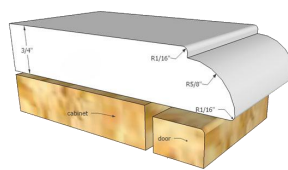
Description

YSMD 5+3+3 Multifunction Marble Edge Profile Chamfer Polishing Machine, this machine is the new generation product of YONGTAO Machinery. It can process single thick slab and double thick slab for all kinds of edge shapes, such as 180 degree round edge, flat edge, chamfer etc. This machine have 2 heads to profile, and 3 heads to polish. The polishing wheel adopts automatic control system. It great save the labor cost, and improve the stability of product effect.

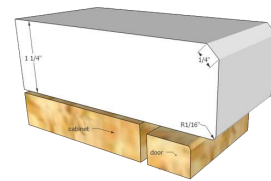
Process Edge Shapes



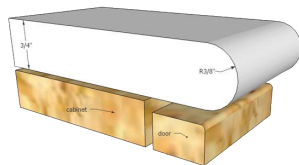
Demi Bullnose



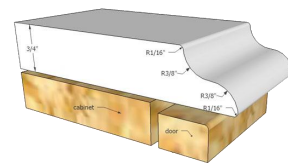
DuPont



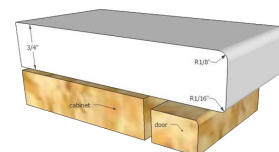
Bevel



Full Bullnose



Ogee



Square Eased

Parameter

No.	Name	Parameter
1	Nos. of profile head	2pc
2	Nos. of polish head	3pc
3	Diameter of wheel	Φ 150mm*30mm
4	Motor power of profile head	5.5kw
5	Nos. Of flat polish head	3pc *0.75kw
6	Nos. Of chamfer polish head	3pc *0.75kw
7	Processing width	100-2800mm
8	Diameter of polishing wheel	95mm
9	Processing speed	0.5-3m/min
10	Max processing thickness	60mm
11	Total power	36.05kw
12	Air consumption	30L/min
13	Water consumption	300L/min
14	Size of machine	7.5m*1.25m*2.3m (with frame)
15	Weight	About4500 kg